

Northshore Cup

High School Regatta
Hosted By:
Pontchartrain Yacht Club

March 24-25, 2018

SAILING INSTRUCTIONS

1 RULES

The regatta will be governed by the Racing Rules of Sailing for 2017-2020 (RRS), the class rules of the 420 and Laser Radial classes as appropriate, and by these Sailing Instructions. This Regatta is a SEISA Level 3 open event. In case of conflict with the above or the Notice of Race, these sailing instructions shall govern.

2 NOTICES TO COMPETITORS

Notices to competitors will be posted on the official notice board located in the clubhouse on the glass case near the bar.

3 CHANGES TO SAILING INSTRUCTIONS

3.1 Changes to the sailing instructions made ashore will be posted before 0900 on the day it will take effect, except that any change to the schedule of races will be posted by 2000 on the day before it will take effect.

3.2 Oral changes to the sailing instructions may be made by hail individually to all competitors in the starting area prior to the warning signal by the race committee signal boat while displaying code flag "L."

4 SIGNALS MADE ASHORE

Signals made ashore will be displayed from the flagpole located at the south end of the PYC lawn. If a postponement is signaled ashore, the warning signal will be made not less than 30 minutes after flag AP is lowered. This alters "RRS Race Signals."

5 SCHEDULE OF RACES

Saturday, March 24, 2018		Sunday, March 25, 2018	
Report Time	0900	Report Time	0900
Skipper's Meeting	0930	Leave Dock	0930
Rigging Clinic	1000	Warning Signal for the First Race of the Day	1000
Leave Dock	1100	No Start After	1400
Warning Signal for the First Race of the Day	1200	Trophy Presentation	ASAP after racing
Crawfish Boil	1700		

Subsequent races each day will be held as soon as possible after the end of the previous race. To alert boats that a race will begin soon, there will be a sequence of short sound signals. The warning signal will be one minute after the initiation of the series of short sound signals.

6 CLASS FLAGS

Class flags will be determined and shown at the Skipper's Meeting.

7 RACING AREA

The sailing area will be in Lake Pontchartrain east of the Lake Pontchartrain Causeway and south of the Pontchartrain Yacht Club, in the vicinity of beacon M-1.

8 COURSE

8.1 Windward/leeward Windward (Courses 1 and 2):

8.1.1 The course will be windward/leeward/windward, once around, start/finish between the windward and leeward *marks*, turning *marks* left to port, as shown in Attachment A. The race committee may set an offset *mark* to port of the windward *mark*.

8.1.2 Before the warning signal, if the race committee hails “line closed,” after *starting*, a boat shall not cross the start/finish line until she is completing the last leg of the course and *finishes*. A boat that breaks this rule shall not correct her error. However, she will be exonerated if she takes a Two-Turns Penalty (see rule 44.2). This changes rule 28.1. If the line is closed, on a leg of the course from 1 to 2 or from 1A to 2, boats may leave the line between the starting buoy and the signal boat either to port or to starboard.

8.2 Triangle (Course 3): The course will be a triangle, once around, start/finish between the windward and leeward *marks*, turning *marks* left to port, as shown in Attachment B.

9 MARKS

Turning *marks* will be orange tetrahedrons. The offset *mark* will be a small orange sphere, if set.

10 THE START

10.1 The Audible-Signal Racing System in Appendix U of the RRS will be used as modified in 10.3. This replaces RRS rule 26.

10.2 The starting line will be between a staff displaying an orange flag on the race committee boat and the course side of the nearby orange sphere.

10.3 An individual recall shall be signaled by a long sound signal and hailing the sail number of each recalled boat.

10.4 A general recall shall consist of two long signals. This changes RRS rule 29. After a general recall, if any part of a boat’s hull, crew or equipment is on the course side of the starting line or one of its extensions during the last minute before her starting signal, she shall sail across an extension to the pre-start side before *starting*. Flag “I” will not be displayed. This changes RRS Rule 30.1. This provision will be in effect even if the race is restarted or resailed, but not if it is *postponed* or *abandoned* before the starting signal.

10.5 A boat that does not *start* within 3 minutes after her starting signal will be scored Did Not Start without a hearing. This changes rule RRS A4 and A5.

11 CHANGE OF THE NEXT LEG OF THE COURSE

To maintain course configuration, *marks* may be moved as necessary, but no *mark* shall be moved when any boat is on the leg that it terminates. There will be no signal for such a course change.

12 THE FINISH

The finishing line will be between a staff displaying an orange flag on the race committee boat and the course side of the nearby *mark*.

13 PENALTY SYSTEM

For all classes, Appendix V1 applies. This modifies RRS 44.1.

14 TIME LIMIT

The time limit for each race will be 30 minutes for the first boat to *finish*.

15 PROTESTS

Protest forms are available from the race office, located in the room next to the manager’s office. The time limit for delivering a *protest* to the race office is one hour after the signal boat docks.

16 SCORING

16.1 The Race Committee will attempt as many races as are practicable, per division. All scores will count. Three races per division constitute a series.

16.2 Scoring is per ISSA Procedural Rules, except that there will be no overall winner. Divisions will be scored separately. Divisions need not have the same number of races completed.

16.3 Breakdown points will not be awarded.

17 COACHING

17.1 Coaching on the water is permitted before the warning signal and after the coached boat *finishes*.

17.2 Except for competitors with coaches on the signal boat, coaching of competitors is limited to the coaching area. The coaching area for coach boats is at least 100 yards to either side of the start/finish line.

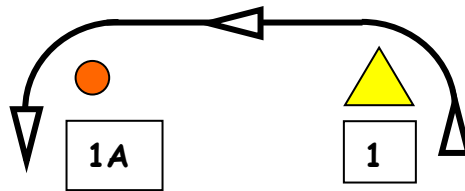
17.3 Competitors with coaches on the signal boat may approach the signal boat for coaching and/or crew changes when the Race Committee indicates that it is ready and safe to do so.

18 DISCLAIMER OF LIABILITY

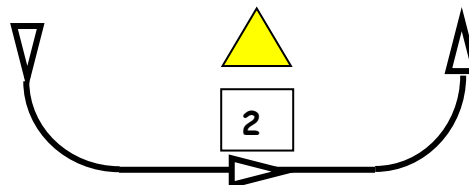
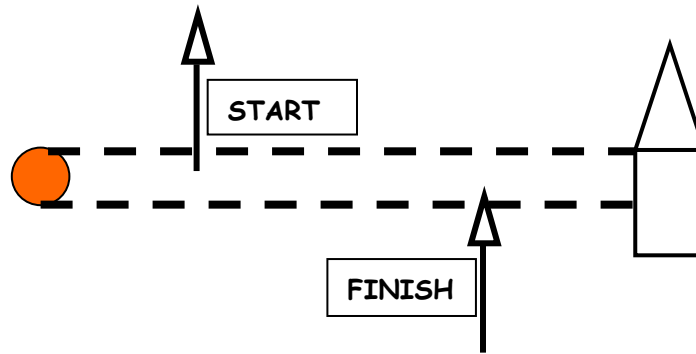
Competitors participate in the regatta entirely at their own risk. See RRS Rule 4, Decision to Race. The organizing authority will not accept any liability for material damage or personal injury or death sustained in conjunction with or prior to, during, or after the regatta.

Attachment A

WINDWARD-LEEWARD COURSE DIAGRAM



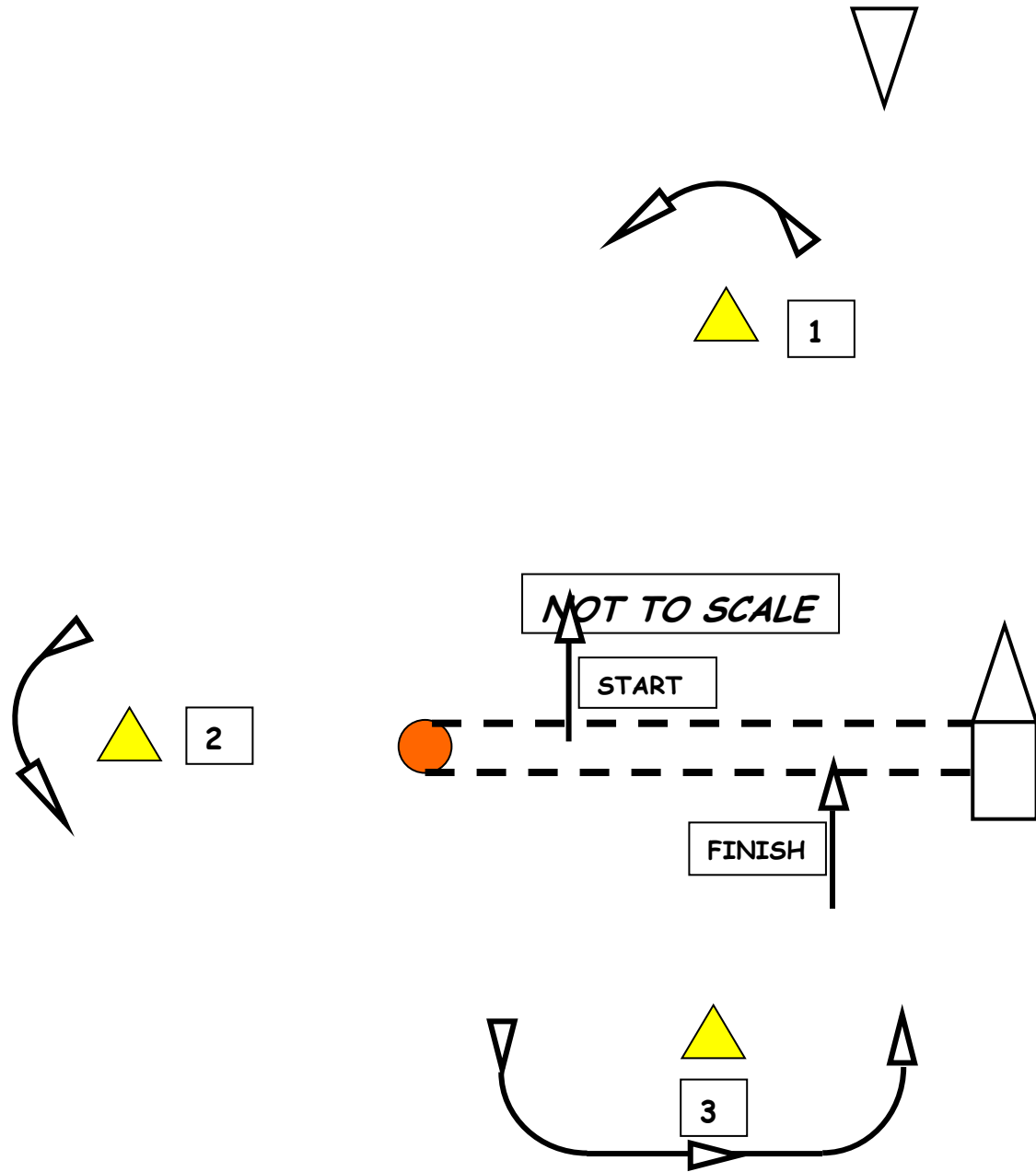
NOT TO SCALE



COURSE 1: START-1(port) -1A(port) -2(port) - FINISH
COURSE 2: START-1(port)-2(port) - FINISH

Attachment B

TRIANGLE COURSE DIAGRAM



COURSE 3: START-1(port) -2(port) 3(port) - FINISH