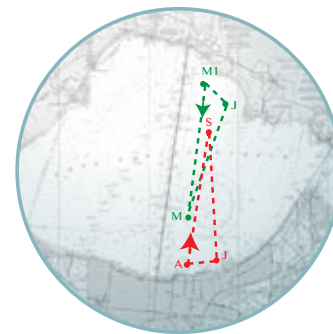




## NOTICE OF RACE

# Full Moon Lake Race 2020



Formally Around the Lake Race [ Now shortened ]

## Saturday ,August 1, 2020

Sponsored by the Corinthian Sailing Assoc.

### 1. Rules

The 2017 Racing Rules of Sailing (RRS) and the general CSA Sailing Instructions will govern the race. ([www.corinthians.org](http://www.corinthians.org))

### 2. Divisions

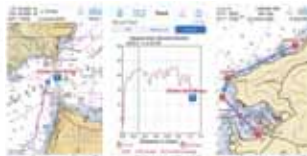
PHRF-Spinnaker & Non-spinnaker: Divisions may be broken in to classes provided sufficient boats register.

### 3. Eligibility

Competitors: The race is open to all. Participating boats should have a current, signed GYA PHRF certificate. Boats without a PHRF certificate will be assigned a rating based upon similar boats. The assigned rating cannot be protested. **New this year, we are asking all registrants to download the app iSailGPS and record their course track.** Its informative and fun to share with friends



i Sail GPS :...  
Marine Nauti...



### 4. Registration

Please register online at [www.corinthians.org](http://www.corinthians.org). Questions can be e-mailed to David Barr [ [davidbarr@opagraphics.com](mailto:davidbarr@opagraphics.com) ] or Gerald Kuehler at [geraldpk@outlook.com](mailto:geraldpk@outlook.com) . There will be no charge for CSA members for this race. There will be no skipper's meeting. Non-CSA member entry fee: \$20.00 Please remit online or send to:

Corinthian Sailing Assoc.  
141 Robert E. Lee Blvd. #259  
New Orleans, La. 70124

### 5. Schedule of Events

Non-spinnaker start at 1400 hrs (2:00 pm)  
Spinnaker start at 1600 hrs (4:00 pm)

## 6. Race Course

**This year we will have 2 courses** . One for the Northshore and one for the Southshore.

There will be NO COMMITTEE BOAT therefore use GPS time for your honorable start & finish.

Competitors may choose to sail the course either clockwise or counterclockwise. Leave the starting mark to starboard for clockwise course & to port for counterclockwise course.

Competitors should finish within 3 boat lengths of their respective finish mark. Course length is 28.5 +- NM [ **Runing lights are imperative this year due to boats crossing each others paths.**]

### **Southshore Racers \_Mark Locations:**

Start... <b>A</b> mark	30 02.001 N	90 06.218 W	
<b>J</b> [ New Orleans Airport ]	30 02.463 N	90 03.100 W	
<b>S</b>	30 15. 001 N	90 02.887 W	[ east of North Draw ] [ 12.47 NM north from J ]
Finish <b>A</b>	30 02.001 N	90 06.218 W	

1	A	Start	0.00 n.miles
2	J Corrected	2.74 n.miles at 079°T	2.74 n.miles
3	S	12.47 n.miles at 001°T	15.21 n.miles
4	A	13.28 n.miles at 192°T	28.49 n.miles

### **Northshore Racers\_ Mark Locations:**

Start... <b>M1</b> mark	30 20.105 N	90 04.004 W	
<b>M</b>	30 06.449 N	90 07.027 W	
<b>J</b>	30 18. 432 N	90 02.568 W	
Finish <b>M1</b>	30 20.105 N	90 04.004 W	

1	M1	Start	0.00 n.miles
2	M	13.82 n.miles at 191°T	13.82 n.miles
3	J	12.52 n.miles at 018°T	26.34 n.miles
4	M1	2.08 n.miles at 323°T	28.42 n.miles

## 7. Finish Times

GPS finish times should be e-mailed or text to both

Gerald Kuehler ( [geraldpk@outlook.com](mailto:geraldpk@outlook.com) or texted to 225-603-2636) and

David Barr [ [davidbarr@davidbarr@opagraphics.com](mailto:davidbarr@davidbarr@opagraphics.com) ] text 504-237-2101

Race results will be posted on the CSA webpage.

## 8. Safety Regulations

It is the sole responsibility of each skipper to determine if his/her boat and crew are capable of participating in the race. Each skipper is reminded to comply with all applicable State and Federal safety regulations. Competitors shall monitor VHF Channel 68 during the race. Running lights must be displayed between sunset & dawn. Violators are subject to protest & disqualification.

## 9. Awards

Trophies will be awarded to First , Second and Third Place boats in each class provided sufficient boats register. [ 3 boats per class needed ]